

Negative Pressure Isolation Ward

*Healthy Life
For
Tomorrow*



AUTECH GROUP

Key Features

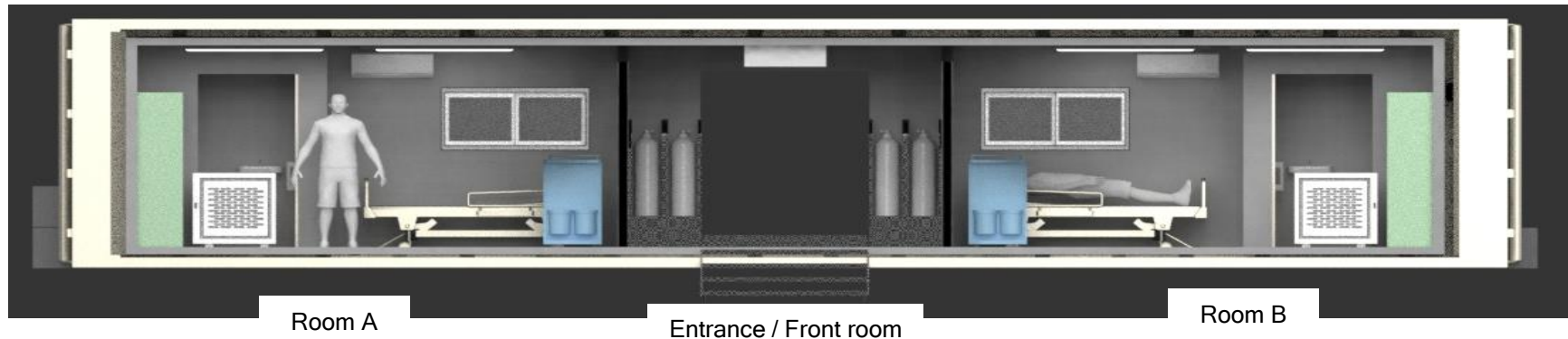
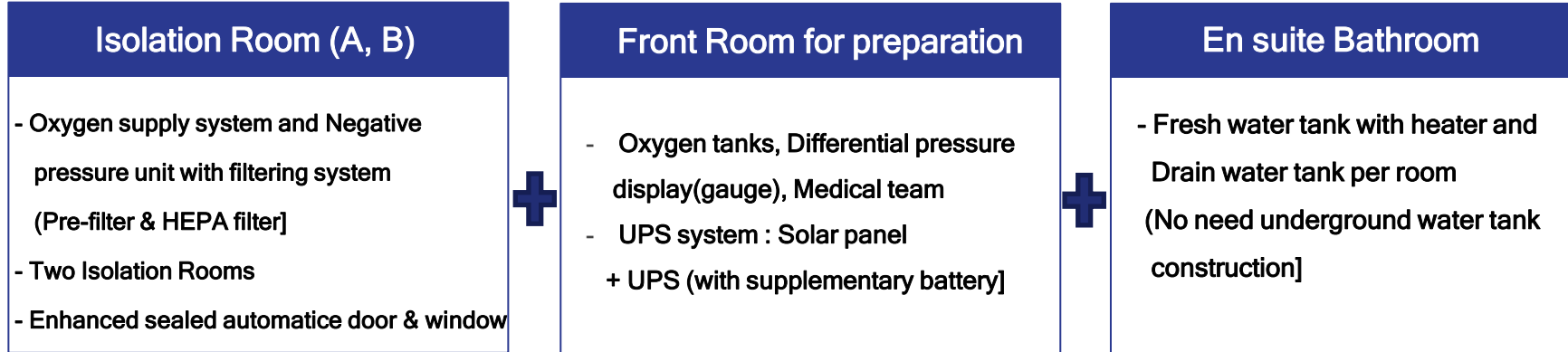


AUTECH's Mobile Negative Pressure Isolation Ward

- Instantly secure more beds with low price & short period compared to build hospital when pandemic started.
- Negative pressure isolation room will fit to intensive medical care for airborne disease, includes COVID19, SARS, MERS etc.
- Highly effective in preventing contaminated air from leaking out of the ward
- Various conversion that meets customer's request, such as changing layout and just for normal clinic container as well.
- Able to stock (Assemble) as like usual container for space efficiency when not using it.

Overview

- Based on 40ft (12m) container, Two Isolation Wards, Two Bathrooms, One communal area installed.
- Able to combine for expanding multiple Isolation Room (Connection bridge may be needed)



Specification

Autech's special team can quickly and safely complete fabrication of these containers off-site, allowing full inspection and fine tuning before transferring them to the actual hospital construction site. Not only would the containers be stackable, but their use could also be converted into a variety of configurations for offices, laboratories and other purposes - all connectable and easily transported by sea or land



Item		Description
Length		12,000 mm
Width		3,000 mm
Height		3,000 mm
Room Size	Room A	30.8 m ²
	Room B	30.8 m ²
	Front room	22.5 m ²
Insulation board Thickness		100 mm
Gross weight		Approx. 8M/T

Exterior

■ Features

Roof



■ Solar panel (2.4Kw) for charging UPS system



Left



Front



Right

■ A/C external units, Bathroom window (Enhanced sealed type)

■ A/C External unit, Bathroom window (Enhanced sealed type)

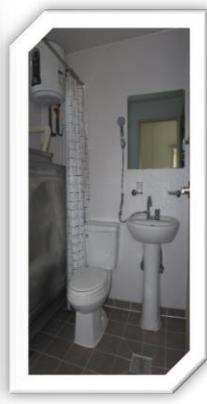
■ Switchboard cabinet: Main control panel + UPS + Supplementary Battery

+ External Power Inlet

* Design, specification may vary and can be customized

Interior

■ Features



Two rooms + Individual Bathroom

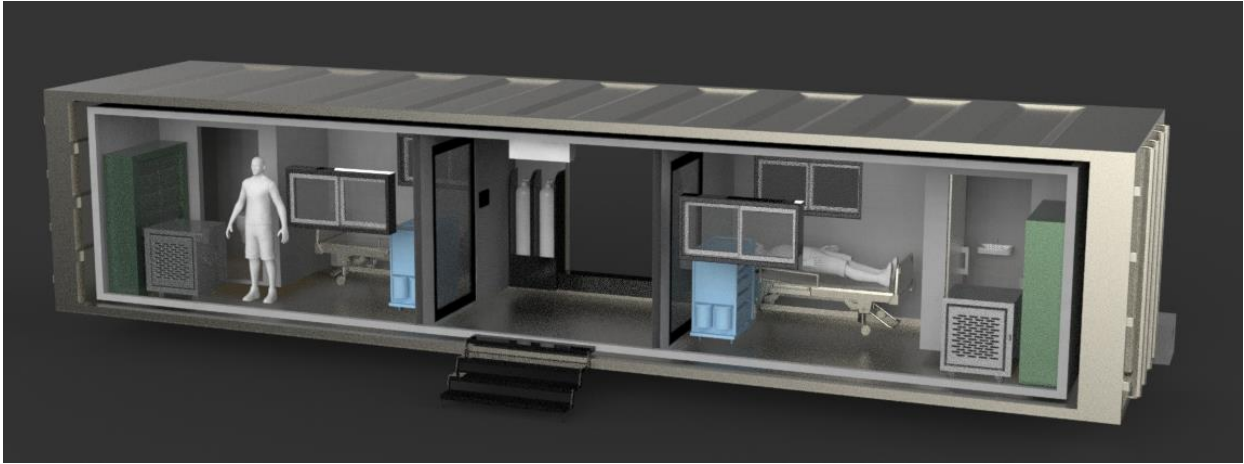
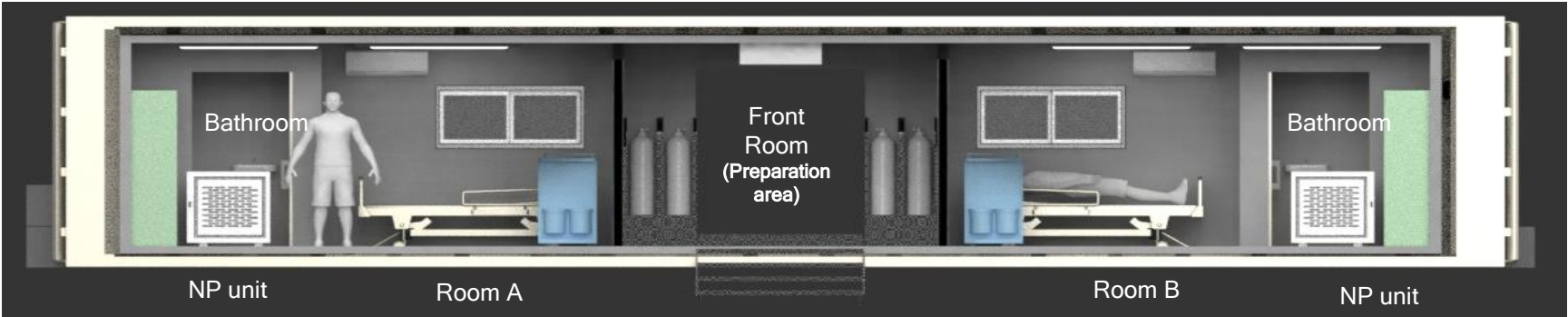
- Room: Personal negative pressure unit, Bed, Cabinet, A/C & Heater
- Medical Equip: Oxygen supply system, Suction, AED, etc
- Room has an en suite bathroom

Front room (communal area)-Preparation area

- A/C & heater
- Oxygen tank 40 liter * 4EA
- Differential pressure display (gauge)

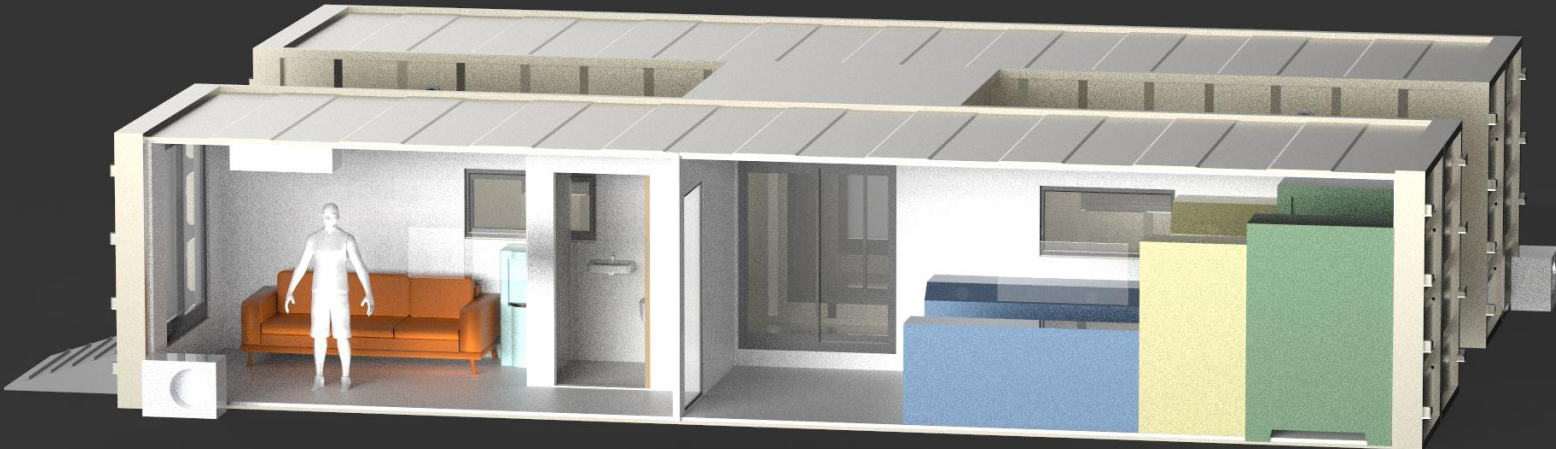
Interior Design

For Negative Pressure Room for patient



Interior Design

For Medical Staff Lounge

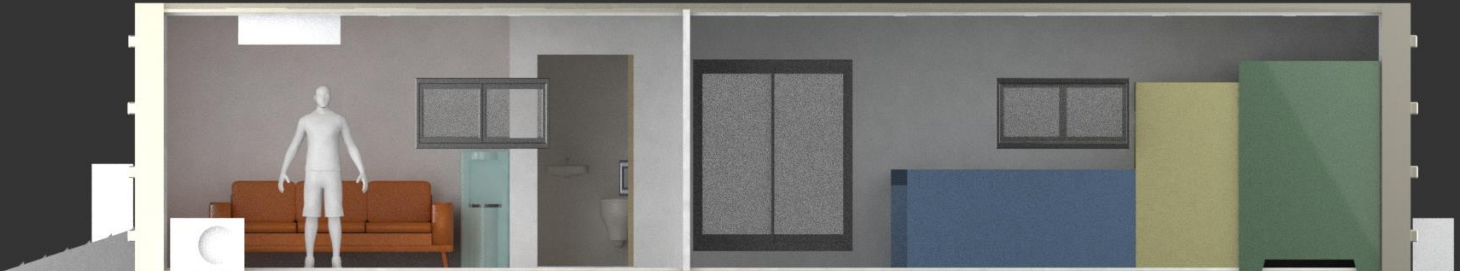


Lounge

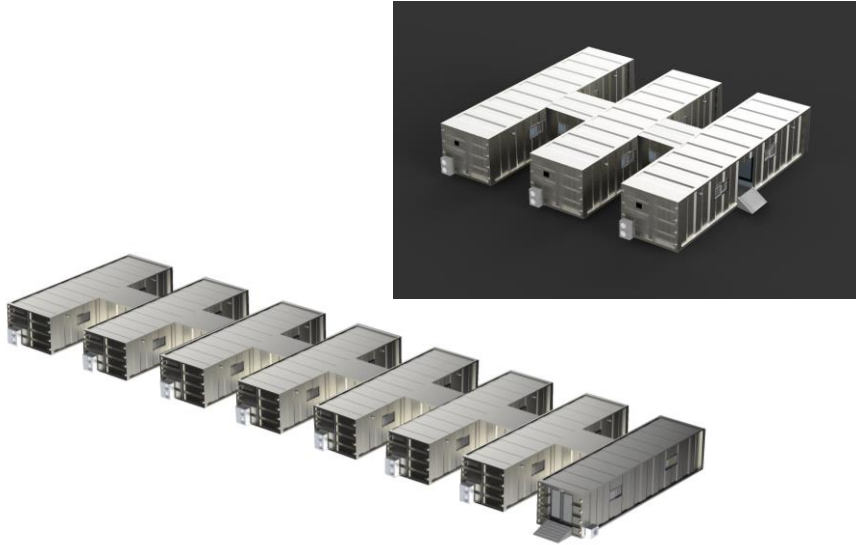
Bathroom

Lobby

Air shower & Disinfection Area



Variety of organizations

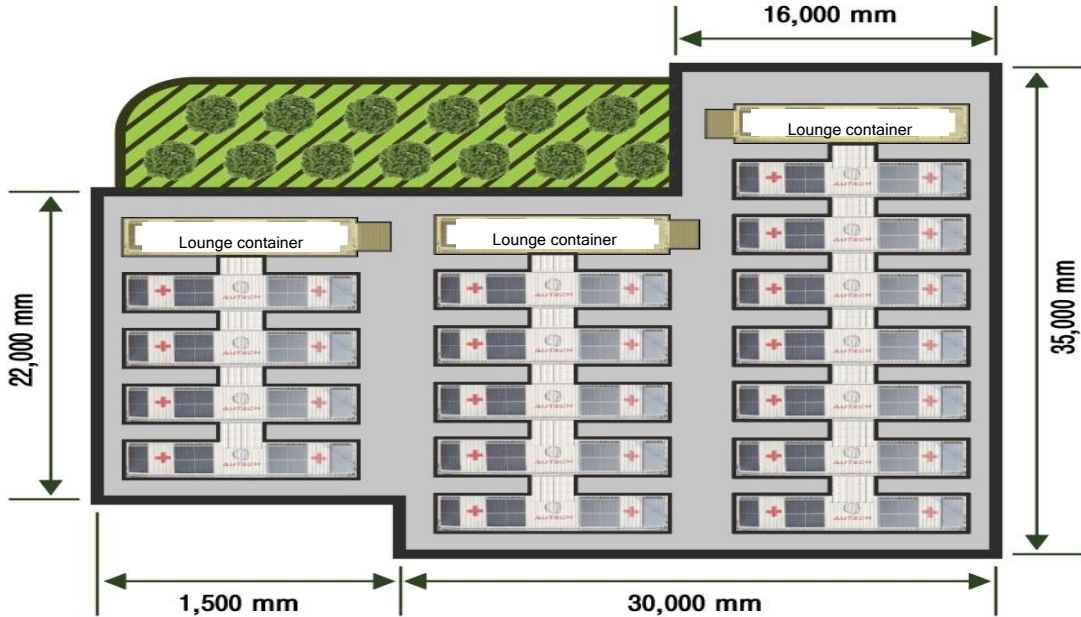


- Able to organize as assembled hospital by using connection bridge.
- Easy to design, Ready to use, Instantly build and disassemble



- Stackable for multiple layer when not using or for Modular system
 - High space efficiency

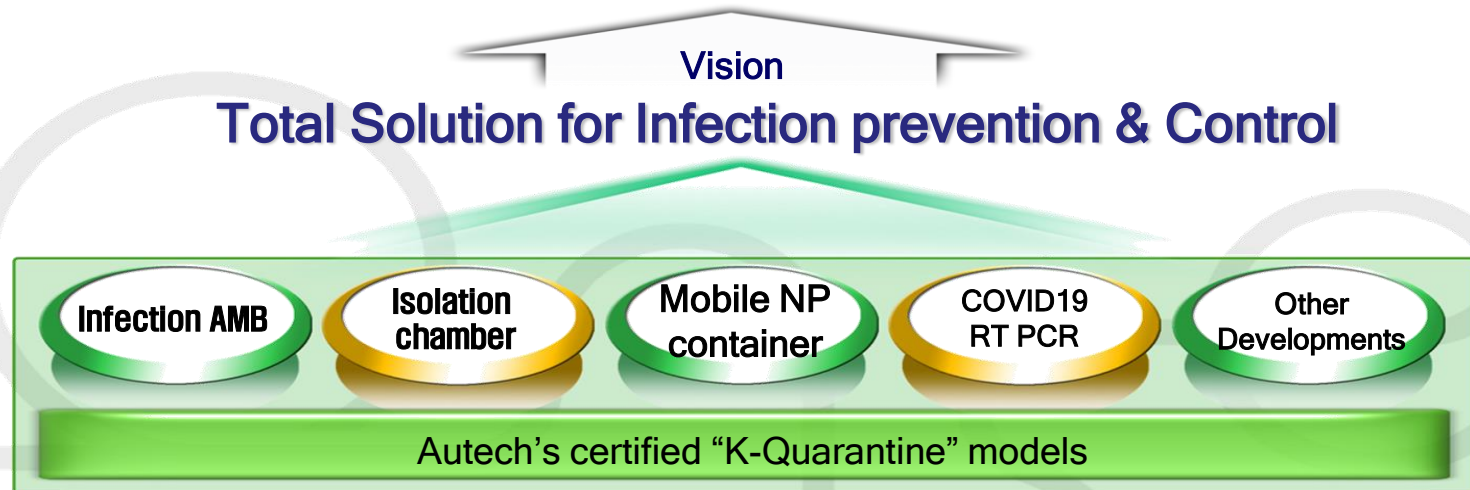
Ex) Assembled design of NP container on vacant lots in front of hospital



■ Securing Maximum beds within limited area

- Autech can submit the best design proposal for your vacant , no worry about it.

Autech, as a leader of “K-Quarantine”, shared with the World





AUTECH

(주) 오텍

www.atech.co.kr

서울사무소

서울특별시 영등포구 선유로 146, 이앤씨드림타워 1101호

TEL : 02-2628-0660~4 E-mail : idea@atech.co.kr

Seoul Office

1101, E&C Dreamtower, 146 Seonyu-ro, Yeongdeungpo-gu, Seoul, 07255, Korea

TEL: 82-2-2628-0660~4 E-mail: idea@atech.co.kr

예산공장/본사 : 충청남도 예산군 고덕면 호음리 930 | Tel: 041-339-3300

Yesan Plant : 1033-36, Yedeok-ro, Godeok-myeon, Yesan-gun, Chungnam, 32401, Korea

경주공장 : 경상북도 경주시 외동읍 냉천리 689-4 | Tel : 054-741-0795~7

Kyeongju Plant : 159-31, Yeongji-ro, Oedong-eup, Gyeongju-si, Gyeongsangbuk-do, 38204, Korea

R&D Center : 서울시 영등포구 선유로 43 나길 12 Autech Group

Autech Group R&D Center : 12 Seonyu-ro 43na-gil, Yeongdeungpo-gu, Seoul, 07210, Korea